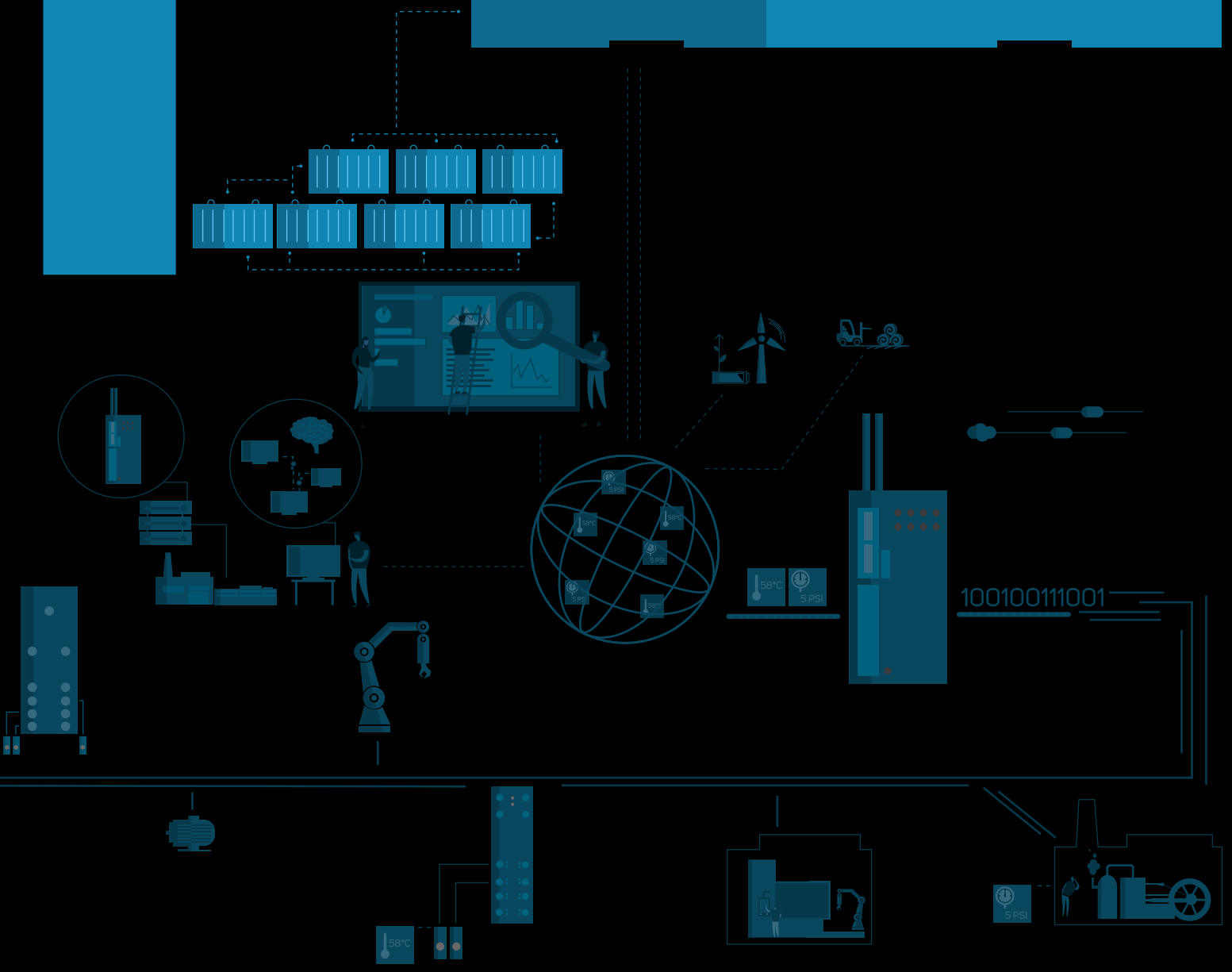


netFIELD CLOUD

DIGITAL INTO THE FUTURE



THE FUTURE IS INTELLIGENT AND CONTAINERIZED

Hilscher, a leader in industrial communication, has launched a unified IoT technology portfolio and named it **netFIELD**. It includes scalable gateway hardware (**netFIELD Edge**), a secure operating system (**netFIELD OS**), ready-to-use applications for the edge (**netFIELD Apps**), an open REST API standard for connecting with **netFIELD**-based applications and services (**netFIELD Cloud**), and a user-friendly self-service portal (**netFIELD Portal**).

netFIELD is a fully managed service that makes it possible to run workloads at the edge from a central point at scale, bringing intelligence to the edge with a hybrid cloud and edge approach.



CONTAINERS ARE REVOLUTIONIZING CONNECTED IOT DEVICES AND NETFIELD.IO IS THE PERFECT MATCH TO MANAGE AND RUN THEM.

INTELLIGENT EDGE

We solve the data integration challenge by running intelligence at the edge. Deploy Docker containers to your devices. Build your own applications or get our ready-to-use containers.

OPEN PLATFORM

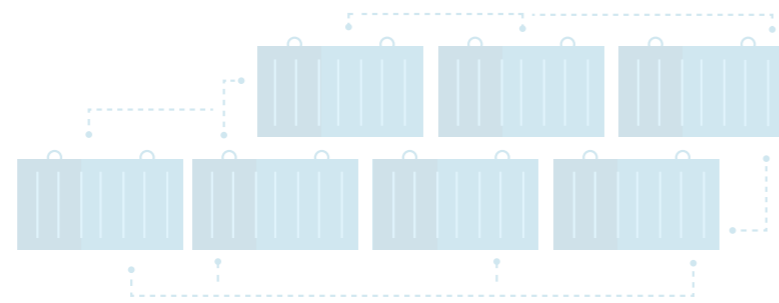
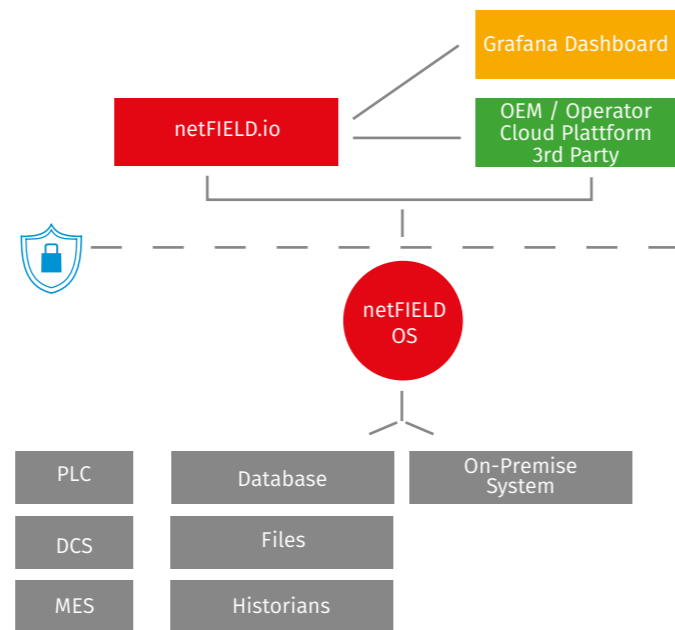
Manage your devices from a single-point with end-to-end security, powerful open APIs and SDKs. Use our data storage or streaming pipeline for further data analysis or visualization.

EASY PORTAL

Manage your device fleet with our self-service portal by deploying containers, updating the operating system or remote managing configurations.

FAST DASHBOARD

Quickly focus on the most important aspects of your data using user-defined visualization dashboards.



INDUSTRIAL IOT SOLUTIONS DO COST MILLIONS

- Why should you reinvent the wheel?
- Join us at the forefront of technology.

With our technology, you pull ahead of your competitors.

REMOTE MANAGER

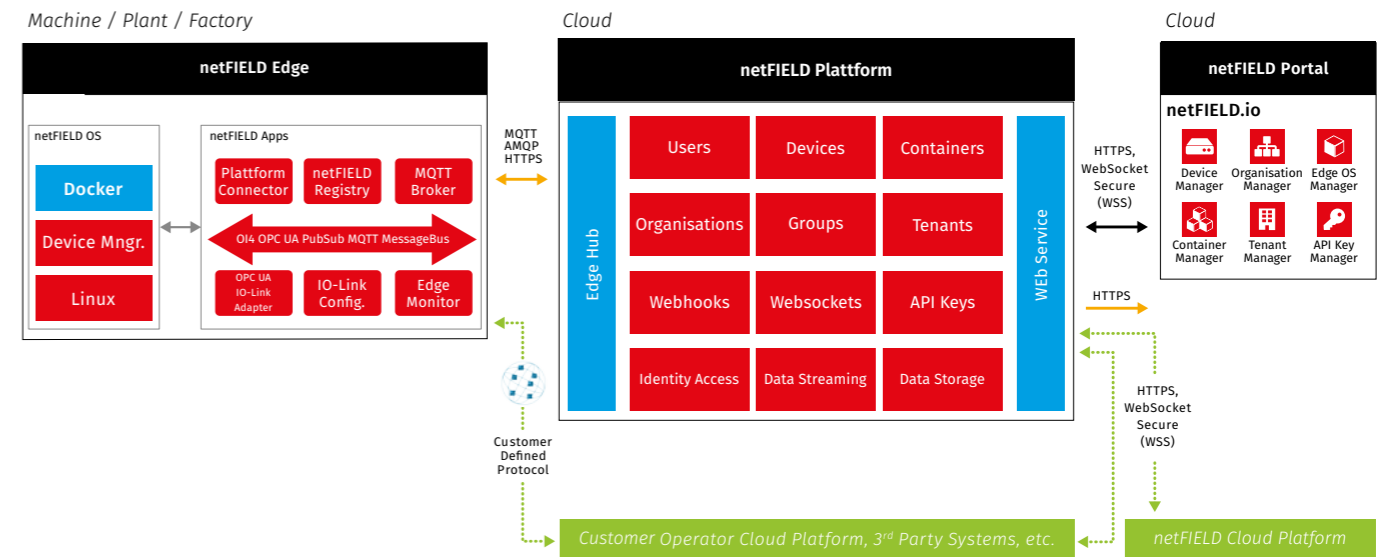
Control and manage your devices with a secure, private connection from anywhere.

CONTAINER MANAGER

Create your container collection and share them with your customers and partners.

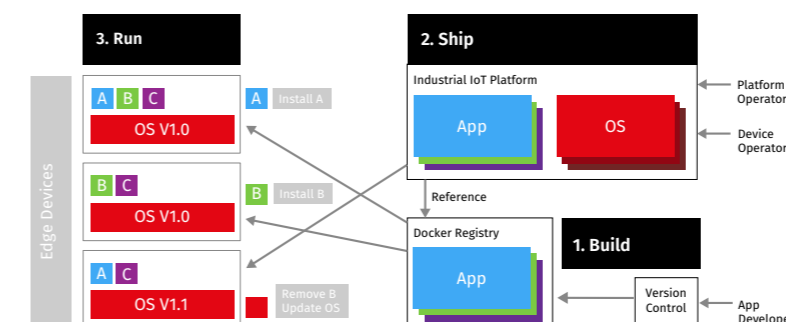
DATA STREAMING & STORAGE

Use our data storage and real-time IoT streaming for dashboarding and analytics applications.



FLEET MANAGEMENT

Allows you to update entire machine series from the **netFIELD** portal with just a few clicks and new functions.



netFIELD is one platform for all your data integration and application management needs.



REACH NEW HEIGHTS

Item	Description
netFIELD PLATFORM	<ul style="list-style-type: none"> Firmware and Container Software Management Data streaming and storage Web services to connect other Cloud Platforms
netFIELD PORTAL	<ul style="list-style-type: none"> Device-, Container-, Organization-, Tenant Management Edge monitoring Dashboards for sensorEDGE
netFIELD SPECIAL FEATURES	<ul style="list-style-type: none"> Fleet Management Meetering hawkBit REST API for App Store Connectivity Zero Touch onboarding

Parameter	Instance	Tenant
Total number of tenants	99	-
Total number of organisations per tenant	50.000	5.000
Total number of users	1.000	100
Total number of containers	1.000.000	250.000
Total number of devices	4.000.000	1.000.000
Total amount of storage in gigabytes	200	50
Total number of API-Keys	50.000	5.000
Total number of API requests during 15 minutes	36.000	9.000
Total number of API requests per month (cap)	5.000.000	1.000.000
Device to cloud maximum message size in MB	1	1
Total number of device to cloud messages per day per device	86.400	86.400
Total number of cloud to device messages and direct method calls per device per day	576.000	144.000
Total number of cloud to device messages per device per minute	400	100
Total monthly uptime percentage	< 99%	< 99%

Item	Description
netFIELD.IO TENANT	Get your slice of a multi-tenant cloud.
netFIELD.IO INSTANCE	Your dedicated cloud deployment.
netFIELD OS	Our proven OS on your devices.
ON-BOARDING WORKSHOP	Hands-on workshop about how our technology can elevate your business outcomes. Any number of participants, one price.

HEADQUARTER

Germany
Hilscher Gesellschaft für
Systemautomation mbH
Rheinstraße 15
65795 Hattersheim (Frankfurt)

contact@netfield.io
www.hilscher.com/netfield

SOCIAL MEDIA

Find more
information
on social media

