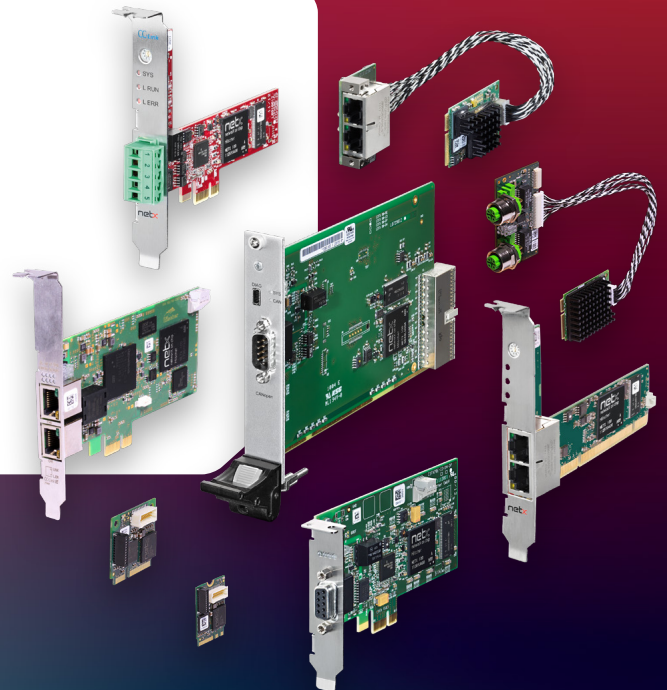


PC Cards

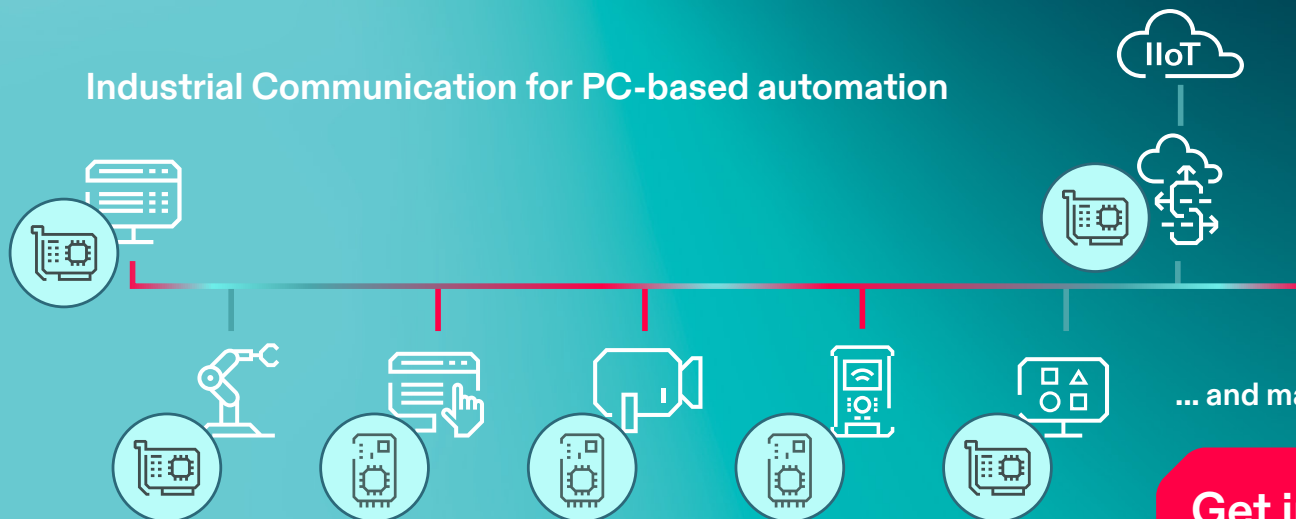


For Fieldbus, Industrial Ethernet & embedded IIoT

- Universal PC cards for **master & cybersecure slave applications**
- One solution for **all industrial protocols and all relevant formats**
- Huge offering of **device drivers** for smooth integration in **every IPC platform**
- Fast commissioning with **all components** from **one supplier**
- Seamless integration of all cards with same **API, same driver & same tools**



Industrial Communication for PC-based automation



... and many more

Get in touch
www.hilscher.com

PC Cards



Unique diversity & simplicity for every application



Industrial PC



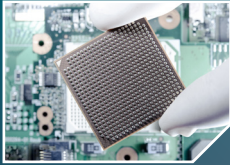
Vision System



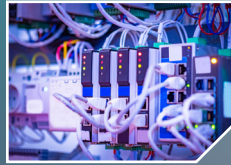
HMI Panel



Robotics



Semiconductor



Control System



Simulation



Edge Devices

Security- and IIoT-ready:
PCIe, Mini PCIe
& M.2

ALL FORMATS & ALL NETWORKS

Form factor Product	Slave only	Universal card Master & Slave	Fieldbus					Industrial Ethernet							2-Channel	Security-ready		
			CANopen	CC-link	DeviceNet	PROFINET	CC-Link IE Basic	CC-Link IE Basic	EtherCAT	EtherNet/IP	ETHERNET POWERLINK	Modbus	PROFINET	SEACOS			PROFINET	
PCI CIFX 50	X	✓	✓	✓	✓	✓	X	✓	✓	✓	✓	✓	✓	✓	✓	X	✓	X
Compact PCI CIFX 80	X	✓	✓	X	✓	✓	X	✓	✓	✓	✓	✓	✓	✓	✓	X	X	X
PCI Express CIFX 50E	X	✓	✓	✓	✓	✓	✓	✓	✓	✓	✓	✓	✓	✓	✓	X	✓	X
Low Profile PCIe CIFX 70E	X	✓	✓	X	✓	✓	✓	✓	✓	✓	✓	✓	✓	✓	✓	X	X	X
(Low Profile) PCIe CIFX (L)PCIE90	✓	X	X	X	X	✓	X	✓	✓	✓	✓	✓	✓	✓	X	✓	X	✓
Mini PCI Express CIFX 90E	X	✓	✓	✓	✓	✓	X	✓	✓	✓	✓	✓	✓	✓	✓	X	✓	X
Mini PCIe halfsize CIFX HPCI90	✓	X	✓	X	✓	✓	X	✓	✓	✓	✓	✓	✓	✓	X	✓	X	✓
M.2 2242 Key B+M CIFX M224290	✓	X	✓	X	✓	✓	X	✓	✓	✓	✓	✓	✓	✓	X	✓	X	✓
M.2 2230 Key A+E CIFX M223090	✓	X	✓	X	✓	✓	X	✓	✓	✓	✓	✓	✓	✓	X	✓	X	✓
M.2 3042 Key B+M CIFX M3042100	X	✓	✓	X	✓	✓	X	✓	✓	✓	✓	✓	✓	✓	✓	X	X	X

1) Slave only 2) also MPI 3) Fieldbus only

