



**Operating Instruction Manual**  
**Generic Slave DTM for EtherCAT Slave Devices**  
**Configuration of EtherCAT Slave Devices**  
**V1.1000**

**Hilscher Gesellschaft für Systemautomation mbH**

**[www.hilscher.com](http://www.hilscher.com)**

DOC071202OI0/EN | Revision 7 | English | 2018-03 | Released | Public

# Table of Contents

1	INTRODUCTION.....	4
1.1	About this Manual .....	4
1.1.1	Descriptions of the Dialog Panes .....	4
1.1.2	Online Help .....	4
1.1.3	List of Revisions .....	4
1.1.4	Conventions in this Manual .....	5
1.2	Legal Notes.....	6
1.3	Registered Trademarks .....	9
1.4	About EtherCAT Generic Slave DTM .....	9
1.4.1	Requirements .....	10
1.5	Dialog Structure of the EtherCAT Generic Slave DTM .....	11
1.5.1	General Device Information.....	12
1.5.2	Navigation Area .....	12
1.5.3	Dialog Pages .....	13
1.5.4	OK, Cancel, Apply and Help.....	14
1.5.5	Table Lines .....	14
1.5.6	Status Bar .....	15
2	GETTING STARTED.....	16
2.1	Configuration Steps .....	16
3	CONFIGURATION .....	17
3.1	Overview Configuration .....	17
3.2	Configuring Device Parameters.....	18
3.3	General .....	19
3.4	Behavior.....	20
3.4.1	State Machine Timeout .....	21
3.4.2	Device Check-up .....	22
3.4.3	Process Data .....	23
3.4.4	Watchdog .....	24
3.5	Distributed Clock.....	25
3.5.1	Sync 0.....	26
3.5.2	Sync 1.....	29
3.6	Process Data .....	30
3.6.1	Sync Manager .....	31
3.6.2	PDO Assignment (Index 0x1C10- 0x1C1F) .....	33
3.6.3	PDO Content (Index 0x1600-0x17FF, 0x1A00-0x1BFF) .....	35
3.7	Mailbox .....	36
3.7.1	CoE.....	36
4	DESCRIPTION.....	37

4.1	Overview Description .....	37
4.2	XML DDF Viewer .....	38
5	APPENDIX .....	39
5.1	User Rights .....	39
5.1.1	Configuration .....	39
5.2	References .....	39
5.3	List of Figures .....	40
5.4	List of Tables .....	40
5.5	Glossary .....	41
5.6	Contacts .....	43

# 1 Introduction

## 1.1 About this Manual

This manual provides information on how to set up EtherCAT Slave devices described with XML DDF files. These devices can be configured with the EtherCAT generic Slave DTM within an FDT Framework.

### 1.1.1 Descriptions of the Dialog Panes

The table below gives an overview for the individual dialog panes descriptions:

Section	Subsection	Manual Page
Configuration	Overview Configuration	17
	General	19
	Behavior	20
	State Machine Timeout	21
	Device Check-up	22
	Process Data	23
	Watchdog	24
	Distributed Clock	25
	Process Data	30
	Sync Manager	31
	PDO Assignment (Index 0x1C10- 0x1C1F)	33
	PDO Content (Index 0x1600-0x17FF, 0x1A00-0x1BFF)	35
	Mailbox	36
	CoE	36
Description	Overview Description	37
	XML DDF Viewer	38

Table 1: Overview Dialog Pages

### 1.1.2 Online Help

The generic EtherCAT Slave DTM contains an integrated online help.

- To open the online help, click on **Help** or press **F1**.

### 1.1.3 List of Revisions

Index	Date	Version	Chapter	Revision
6	17-02-24	1.1000	1.4.1	Section <i>Requirements</i> Internet access added, Windows 8.1 and Windwos 10 added.
7	18-02-14	1.1000		Versioning information revised (title page and this section).

Table 2: List of Revisions

## 1.1.4 Conventions in this Manual

Notes, operation instructions and results of operation steps are marked as follows:

### Notes



**Important:** <important note you must follow to avoid malfunction>



**Note:** <general note>



<note, where to find further information>

### Operation Instructions

1. <instruction>

2. <instruction>

or

➤ <instruction>

### Results

↪ <result>

## 1.2 Legal Notes

### Copyright

© Hilscher Gesellschaft für Systemautomation mbH

All rights reserved.

The images, photographs and texts in the accompanying materials (in the form of a user's manual, operator's manual, Statement of Work document and all other document types, support texts, documentation, etc.) are protected by German and international copyright and by international trade and protective provisions. Without the prior written consent, you do not have permission to duplicate them either in full or in part using technical or mechanical methods (print, photocopy or any other method), to edit them using electronic systems or to transfer them. You are not permitted to make changes to copyright notices, markings, trademarks or ownership declarations. Illustrations are provided without taking the patent situation into account. Any company names and product designations provided in this document may be brands or trademarks by the corresponding owner and may be protected under trademark, brand or patent law. Any form of further use shall require the express consent from the relevant owner of the rights.

### Important notes

Utmost care was/is given in the preparation of the documentation at hand consisting of a user's manual, operating manual and any other document type and accompanying texts. However, errors cannot be ruled out. Therefore, we cannot assume any guarantee or legal responsibility for erroneous information or liability of any kind. You are hereby made aware that descriptions found in the user's manual, the accompanying texts and the documentation neither represent a guarantee nor any indication on proper use as stipulated in the agreement or a promised attribute. It cannot be ruled out that the user's manual, the accompanying texts and the documentation do not completely match the described attributes, standards or any other data for the delivered product. A warranty or guarantee with respect to the correctness or accuracy of the information is not assumed.

We reserve the right to modify our products and the specifications for such as well as the corresponding documentation in the form of a user's manual, operating manual and/or any other document types and accompanying texts at any time and without notice without being required to notify of said modification. Changes shall be taken into account in future manuals and do not represent an obligation of any kind, in particular there shall be no right to have delivered documents revised. The manual delivered with the product shall apply.

Under no circumstances shall Hilscher Gesellschaft für Systemautomation mbH be liable for direct, indirect, ancillary or subsequent damage, or for any loss of income, which may arise after use of the information contained herein.

### Liability disclaimer

The hardware and/or software was created and tested by Hilscher Gesellschaft für Systemautomation mbH with utmost care and is made available as is. No warranty can be assumed for the performance or flawlessness of the hardware and/or software under all application

conditions and scenarios and the work results achieved by the user when using the hardware and/or software. Liability for any damage that may have occurred as a result of using the hardware and/or software or the corresponding documents shall be limited to an event involving willful intent or a grossly negligent violation of a fundamental contractual obligation. However, the right to assert damages due to a violation of a fundamental contractual obligation shall be limited to contract-typical foreseeable damage.

It is hereby expressly agreed upon in particular that any use or utilization of the hardware and/or software in connection with

- Flight control systems in aviation and aerospace;
- Nuclear fusion processes in nuclear power plants;
- Medical devices used for life support and
- Vehicle control systems used in passenger transport

shall be excluded. Use of the hardware and/or software in any of the following areas is strictly prohibited:

- For military purposes or in weaponry;
- For designing, engineering, maintaining or operating nuclear systems;
- In flight safety systems, aviation and flight telecommunications systems;
- In life-support systems;
- In systems in which any malfunction in the hardware and/or software may result in physical injuries or fatalities.

You are hereby made aware that the hardware and/or software was not created for use in hazardous environments, which require fail-safe control mechanisms. Use of the hardware and/or software in this kind of environment shall be at your own risk; any liability for damage or loss due to impermissible use shall be excluded.

### Warranty

Hilscher Gesellschaft für Systemautomation mbH hereby guarantees that the software shall run without errors in accordance with the requirements listed in the specifications and that there were no defects on the date of acceptance. The warranty period shall be 12 months commencing as of the date of acceptance or purchase (with express declaration or implied, by customer's conclusive behavior, e.g. putting into operation permanently).

The warranty obligation for equipment (hardware) we produce is 36 months, calculated as of the date of delivery ex works. The aforementioned provisions shall not apply if longer warranty periods are mandatory by law pursuant to Section 438 (1.2) BGB, Section 479 (1) BGB and Section 634a (1) BGB [Bürgerliches Gesetzbuch; German Civil Code] If, despite of all due care taken, the delivered product should have a defect, which already existed at the time of the transfer of risk, it shall be at our discretion to either repair the product or to deliver a replacement product, subject to timely notification of defect.

The warranty obligation shall not apply if the notification of defect is not asserted promptly, if the purchaser or third party has tampered with the products, if the defect is the result of natural wear, was caused by unfavorable operating conditions or is due to violations against our operating regulations or against rules of good electrical engineering

practice, or if our request to return the defective object is not promptly complied with.

### **Costs of support, maintenance, customization and product care**

Please be advised that any subsequent improvement shall only be free of charge if a defect is found. Any form of technical support, maintenance and customization is not a warranty service, but instead shall be charged extra.

### **Additional guarantees**

Although the hardware and software was developed and tested in-depth with greatest care, Hilscher Gesellschaft für Systemautomation mbH shall not assume any guarantee for the suitability thereof for any purpose that was not confirmed in writing. No guarantee can be granted whereby the hardware and software satisfies your requirements, or the use of the hardware and/or software is uninterrupted or the hardware and/or software is fault-free.

It cannot be guaranteed that patents and/or ownership privileges have not been infringed upon or violated or that the products are free from third-party influence. No additional guarantees or promises shall be made as to whether the product is market current, free from deficiency in title, or can be integrated or is usable for specific purposes, unless such guarantees or promises are required under existing law and cannot be restricted.

### **Confidentiality**

The customer hereby expressly acknowledges that this document contains trade secrets, information protected by copyright and other patent and ownership privileges as well as any related rights of Hilscher Gesellschaft für Systemautomation mbH. The customer agrees to treat as confidential all of the information made available to customer by Hilscher Gesellschaft für Systemautomation mbH and rights, which were disclosed by Hilscher Gesellschaft für Systemautomation mbH and that were made accessible as well as the terms and conditions of this agreement itself.

The parties hereby agree to one another that the information that each party receives from the other party respectively is and shall remain the intellectual property of said other party, unless provided for otherwise in a contractual agreement.

The customer must not allow any third party to become knowledgeable of this expertise and shall only provide knowledge thereof to authorized users as appropriate and necessary. Companies associated with the customer shall not be deemed third parties. The customer must obligate authorized users to confidentiality. The customer should only use the confidential information in connection with the performances specified in this agreement.

The customer must not use this confidential information to his own advantage or for his own purposes or rather to the advantage or for the purpose of a third party, nor must it be used for commercial purposes and this confidential information must only be used to the extent provided for in this agreement or otherwise to the extent as expressly authorized by the disclosing party in written form. The customer has the right, subject to the obligation to confidentiality, to disclose the terms and conditions of this agreement directly to his legal and financial consultants as would be required for the customer's normal business operation.



**Export provisions**

The delivered product (including technical data) is subject to the legal export and/or import laws as well as any associated regulations of various countries, especially such laws applicable in Germany and in the United States. The products / hardware / software must not be exported into such countries for which export is prohibited under US American export control laws and its supplementary provisions. You hereby agree to strictly follow the regulations and to yourself be responsible for observing them. You are hereby made aware that you may be required to obtain governmental approval to export, reexport or import the product.

## 1.3 Registered Trademarks

Windows® XP, Windows® Vista, Windows® 7, Windows® 8, Windows® 8.1 and Windows® 10 are registered trademarks of Microsoft Corporation.

EtherCAT® is a registered trademark of Beckhoff Automation GmbH, Verl, Germany, formerly Elektro Beckhoff GmbH.

All other mentioned trademarks are property of their respective legal owners.

## 1.4 About EtherCAT Generic Slave DTM

You can use the EtherCAT generic Slave DTM to configure the EtherCAT Slave devices described with XML DDF files within a FDT Framework.

The information necessary for the configuration of the EtherCAT Slave devices is stored within the EtherCAT Master device when using the EtherCAT generic Slave DTM and thus the Master device is configured.

## 1.4.1 Requirements

### System Requirements

- PC with 1 GHz processor or higher
- Windows® XP SP3,  
Windows® Vista (32-Bit) SP2,  
Windows® 7 (32-Bit and 64-Bit) SP1,  
Windows® 8 (32-Bit and 64-Bit),  
Windows® 8.1 (32-Bit and 64-Bit),  
Windows® 10 (32-Bit and 64-Bit)
- Administrator privilege required for installation
- Internet Explorer 5.5 or higher
- RAM: min. 512 MByte, recommended 1024 MByte
- Graphic resolution: min. 1024 x 768 pixel
- Keyboard and Mouse
- Restriction: Touch screen is not supported.



**Note:** If the project file is used on a further PC,

- this PC must also comply with the above system requirements,
- the device description files of the devices used in the project must be imported into the configuration software SYCON.net on the new PC,
- and the DTMs of the devices used in the project must also be installed on that further PC.

### Requirements EtherCAT Generic Slave DTM

Requirements for working with the EtherCAT generic Slave DTM are:

- Installed FDT/DTM V 1.2 compliant frame application
- Installed EtherCAT Master DTM
- DDF file of the devices to be configured
- The user needs to reload the Device Catalog

### Loading XML DDF files

To add devices to the **netDevice** device catalog, you must import the XML DDF file of the used device via **netDevice** menu **Network > Import Device Descriptions** .... into the DDF folder of the DTM. Then the Device Cataloge must be reloaded. The folder DDF inclusively Windows® XP is located in the application data directory (All Users) of the configuration software (or from with Windows® 7 on in the *C:\ProgramData\SYCONnet* directory).



For further information refer to section *Configuration Steps* on page 16 , under step 1 and 2.

## 1.5 Dialog Structure of the EtherCAT Generic Slave DTM

The graphical user interface of the DTM is composed of different areas and elements listed hereafter:

1. A header area containing the **General Device Information**,
2. The **Navigation Area** (area on the left side),
3. The **Dialog Pane** (main area on the right side),
4. **OK, Cancel, Apply, Help**,
5. The **Status Line** containing information e. g. the online-state of the DTM.

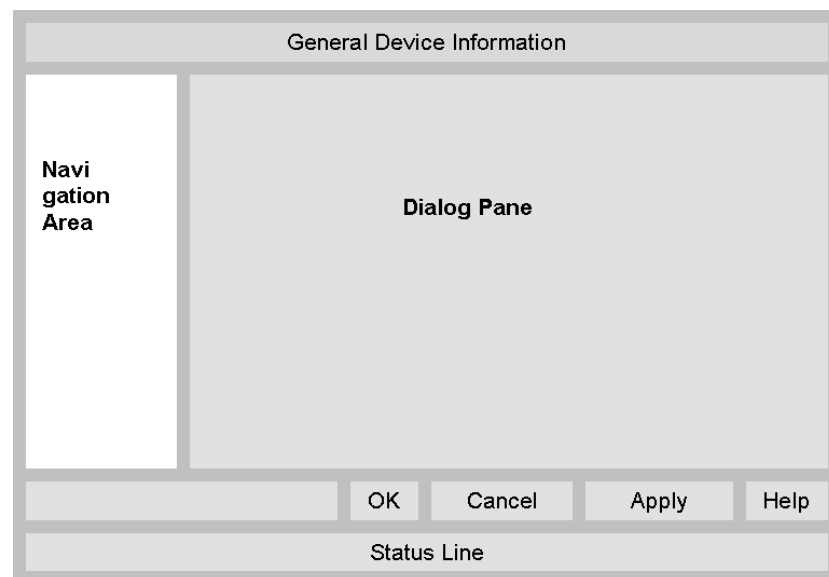


Figure 1: Dialog Structure of the Generic EtherCAT Slave DTM

## 1.5.1 General Device Information

Parameter	Meaning
IO Device	Name of the device
Vendor	Vendor name of the device
Device ID	Identification number of the device
Vendor ID	Identification number of the vendor

Table 3: General Device Information

## 1.5.2 Navigation Area

The **Navigation Area** contains folders and subfolders to open the dialog panes of the DTM.

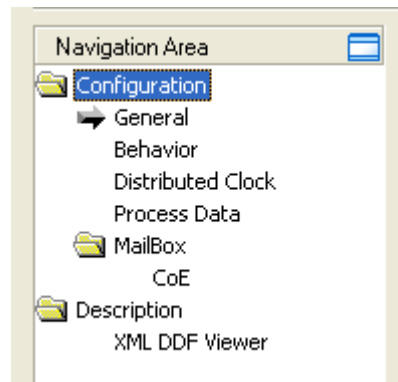


Figure 2: Navigation Area

- Select the required folder and subfolder.
- The corresponding Dialog pane is displayed.

### Hide / display Navigation

	Hiding the navigation area (above right side).
Show navigation area	<b>Opening</b> the navigation area (below left side).

### 1.5.3 Dialog Pages

At the dialog pane the **Configuration** or **Description** panes are opened via the corresponding folder in the navigation area.

Configuration	
General	At the <b>General</b> pane EtherCAT Slave information is displayed. For further information, refer to section <i>General</i> on page 19.
Behavior	At pane <b>Behavior</b> the parameters of the Device checkup, the Process Data and the Watchdog are described. For further information, refer to section <i>Behavior</i> on page 20.
Distributed Clock	At the pane <b>Distributed Clock</b> , the DC Sync mechanism and Sync0 and Sync1 can be activated and the parameters Sync 0 Cycle Time, Sync 0 Shift Time, Sync 1 Cycle Time and Sync1 Shift Time can be determined and set. For further information, refer to section <i>Distributed Clock</i> on page 25.
Process data	At pane <b>Process Data</b> the parameters of the Sync Manager are displayed, the PDO Assignment and the PDO content. For further information, refer to section <i>Process Data</i> on page 30.
Mailbox	At pane <b>Mailbox</b> you can get information on mailbox-based data transfer and the CoE (CANopen over Ethernet) functionality. For further information, refer to section <i>Mailbox</i> on page 33.
Description	
XML DDF Viewer	By use of the <b>XML DDF-Viewer</b> a DDF file can be viewed and searched through. For further information, refer to section <i>XML DDF Viewer</i> on page 38.

Table 4: Overview Dialog Panes

## 1.5.4 OK, Cancel, Apply and Help

**OK, Cancel, Apply and Help** you can use as described hereafter.

	Meaning
<b>OK</b>	To confirm your latest settings, click <b>OK</b> . All changed values will be applied on the frame application database. <i>The dialog then closes.</i>
<b>Cancel</b>	To cancel your latest changes, click <b>Cancel</b> . Answer to the safety query <b>Configuration data has been changed. Do you want to save the data?</b> by <b>Yes</b> , <b>No</b> or <b>Cancel</b> . <b>Yes:</b> The changes are saved or the changed values are applied on the frame application database. <i>The dialog then closes.</i> <b>No:</b> The changes are <u>not</u> saved or the changed values are not applied on the frame application database. <i>The dialog then closes.</i> <b>Cancel:</b> <i>Back to the DTM.</i>
<b>Apply</b>	To confirm your latest settings, click <b>Apply</b> . All changed values will be applied on the frame application database. <i>The dialog remains opened.</i>
<b>Help</b>	To open the DTM online help, click <b>Help</b> .

Table 5: OK, Cancel, Apply and Help

## 1.5.5 Table Lines

In the DTM dialog pane table lines can be selected, inserted or deleted.

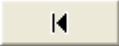





	Meaning
	To select the first line of a table use <b>First Line</b> .
	To select the previous line of a table use <b>Previous Line</b> .
	To select the next line of a table use <b>Next Line</b> .
	To select the last line of a table use <b>Last Line</b> .
	<b>Create a new Line</b> inserts new lines into the table.
	<b>Delete selected Line</b> deletes the selected line from the table.

Table 6: Selecting, inserting, deleting Table Line

## 1.5.6 Status Bar

The **Status Bar** displays information about the current state of the DTM. The current activity, e.g. the DTM connection state, is signaled graphically via icons in the status bar.

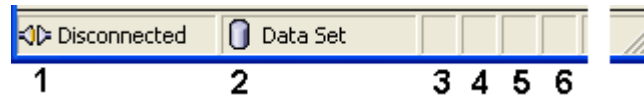


Figure 3: Status Bar – Status Fields 1 to 6






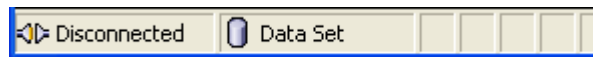
Status Field	Icon / Meaning	
1	<b>DTM Connection States</b>	
		<b>Connected:</b> Icon closed = Device is online
		<b>Disconnected:</b> Icon opened = Device is offline
2	<b>Data Source States</b>	
		<b>Data set:</b> The displayed data are read out from the instance data set (database).
		<b>Device:</b> The displayed data are read out from the device.
3	<b>States of the instance Date Set</b>	
		<b>Valid Modified:</b> Parameter is changed (not equal to data source).

Table 7: Status Bar Icons [1]

Offline State



Online State

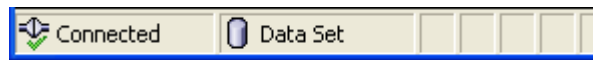


Figure 4: Status Bar Display Example

## 2 Getting started

### 2.1 Configuration Steps

The following table describes the steps to configure a EtherCAT Slave device with the EtherCAT generic Slave DTM as it is typical for many cases. At this time it is presupposed that the EtherCAT Master DTM installation was already done.

#	Step	Short Description	For detailed information see section	Page
1	Add EtherCAT Slave in the Device Catalog	Add the Slave in the Device Catalog by importing the device description file to the Device Catalog. Depending of the FDT Container. For netDevice: - <b>Network &gt; Import Device Descriptions.</b>	(See Operating Instruction Manual netDevice and netProject)	-
2	Load device catalog	Depending of the FDT Container: For netDevice: - select <b>Network &gt; Device Catalog</b> , - select button <b>Reload Catalog</b> .	(See Operating Instruction Manual netDevice and netProject)	-
3	Create new project / Open existing project	Depending of the frame application. For the configuration software: - select <b>File &gt; New</b> or <b>File &gt; Open</b> .	(See Operating Instruction Manual of the Frame Application)	-
4	Insert Master or Slave into configuration	Depending of the FDT Container: For netDevice: - in the Device Catalog click to the Master, - and insert the device via drag and drop <b>to the line</b> in the network view, - in the Device Catalog click to the Slave, - and insert the device via drag and drop <b>to the Master bus line</b> in the network view.	-	-
5	Configure Slave	Configure the Slave. - Double click to the device icon of the Slave. - The generic Slave DTM configuration dialog is displayed. In the generic Slave DTM configuration dialog: - configure the EtherCAT device parameters. - close the generic Slave DTM configuration dialog via the button <b>OK</b> .	Configuring Device Parameters	18
6	Configuration Steps Master device	Configure the Master device via EtherCAT-Master DTM.	(See Operating Instruction Manual DTM for EtherCAT-Master devices)	-
7	Save project	Depending of the frame application. For the configuration software: - select <b>File &gt; Save</b> .	(See Operating Instruction Manual of the Frame Application)	-

Table 8: Getting started - Configuration Steps



## 3 Configuration

### 3.1 Overview Configuration

#### Dialog Panes “Configuration”

The table below gives an overview about the available **Configuration** dialog panes descriptions:

Section	Manual Page
Overview Configuration	17
General	19
Behavior	20
State Machine Timeout	21
Device Check-up	22
Process Data	23
Watchdog	24
Distributed Clock	25
Process Data	30
Sync Manager	31
PDO Assignment (Index 0x1C10- 0x1C1F)	33
PDO Content (Index 0x1600-0x17FF, 0x1A00-0x1BFF)	35
Mailbox	36
CoE	36
Overview Description	37
XML DDF Viewer	38

Table 9: Descriptions of the Dialog Pages Configuration

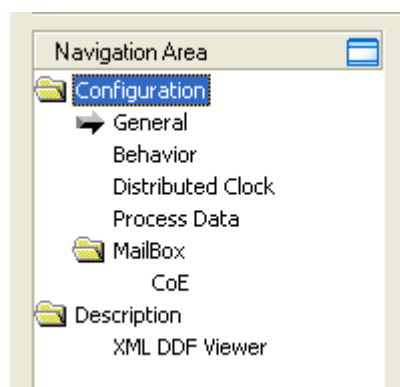


Figure 5: Navigation Area - Configuration



For information to further steps as **Download Configuration** or **Diagnosis**, refer to the Operating Instruction Manual *DTM for EtherCAT Master devices*.

## 3.2 Configuring Device Parameters

The following steps are needed to configure the device parameters using the EtherCAT generic Slave DTM:

- Configure the behavior of the EtherCAT-Slave as described in section “*Behavior*” at page 20.
- On the **Behavior** page set the parameters for
  - the Device checkup,
  - the **Process data**
  - and the **Watchdog**.
- Configure the process data of the EtherCAT-Slave as described in section *Distributed Clock* at page 25.
- On the **Process Data** page set the parameters for
  - the **Sync Manager**,
  - the **PDO Assignment (0x1C10-0x1C2F)**
  - and the **PDO Content (0x1600-0x17FF)**.

### 3.3 General

The **General** dialog page shows the **Description** of the EtherCAT Slave.



**Note:** The **Station Address** is set by the EtherCAT Master, therefore the corresponding data field is not editable.

Figure 6: Configuration > General

Parameter	Meaning
Description	Symbolic Name of the EtherCAT Slave station.
Device type	Device type as defined in the DDF
Device name	Device name as defined in the DDF
Product revision	Product revision as defined in the DDF or E <sup>2</sup> PROM
Physics	EtherCAT Port configuration: available ports and their types.
Station Address	Station Address denominates a logical address. The station address of a slave is set in the master DTM.

Table 10: General Page Parameters

**Physics** in the context of EtherCAT Port configuration is described by two characters indicating the physical interface of the connection. The coding is as follows:

Physics	Port type
K	E-Bus
Y	100Base-TX
F	100Base-FX

Table 11: Coding of Parameter "Physics"

### 3.4 Behavior

At the page **Behavior**, the parameters of

- the state machine timeout values
- the device checkup,
- the process data
- and the watchdog timer.

are set and displayed.

Behavior			
State Machine Timeout (ms)			
I2P:	3000		
P2S, S2O:	10000		
Back to P, I:	5000		
O2S:	200		
Device checkup			
<input checked="" type="checkbox"/>	VendorID		
<input checked="" type="checkbox"/>	Product code		
<input type="checkbox"/>	Revision		
Process data			
<input checked="" type="checkbox"/>	Use LRD/LWR instead of LRW		
Watchdog			
<input type="checkbox"/>	Set multiplier (Reg. 400 h):	2498	
<input type="checkbox"/>	Set PDI watchdog (Reg. 410 h):	1000	ms 100.000
<input type="checkbox"/>	Set SM watchdog (Reg. 420 h):	1000	ms 100.000

Figure 7: Configuration > Behavior

### 3.4.1 State Machine Timeout

For various transitions between states of the EtherCAT slave state machine the associated timeout values can be configured separately in the state machine timeout section of the 'Behavior' dialog:

- **I2P**  
This value applies to the transition from *Init* state to *Pre-Operational* state
- **P2S, S2O**  
This value applies to the transition from *Pre-Operational* state to *Safe-Operational* state and from *Safe-Operational* state to *Operational* state.
- **Back to P, I**  
This value applies to the transition from any higher state back to *Pre-Operational* state or *Init* state.
- **O2S**  
This value applies to the transition from *Operational* state to *Safe-Operational* state.



**Note: These timeout values are specified in units of milliseconds.**

State Machine Timeout (ms)	
I2P:	<input type="text" value="3000"/>
P2S, S2O:	<input type="text" value="10000"/>
Back to P, I:	<input type="text" value="5000"/>
O2S:	<input type="text" value="200"/>

Figure 8: Configuration > Behavior > State Machine Timeout - Configuration

### 3.4.2 Device Check-up

The *device check-up* part of the **Behavior** dialog looks like:

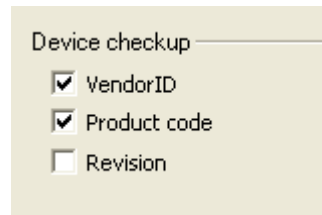


Figure 9: Configuration > Behavior > Device Check

The following table shows which items identifying the EtherCAT device can optionally be verified during device check-up if marked in the dialog accordingly.

Parameter	Meaning
VendorID	Device's vendor ID (DDF or stored device-internally)
Product code	Device's product code (DDF or stored device-internally)
Revision	Device's revision (DDF or stored device-internally)

Table 12: Parameters Behavior > Device checkup

The values within the DDF file are verified against the corresponding information stored in the device (for example, within an E<sup>2</sup>PROM circuit), if the according check box is marked.

### 3.4.3 Process Data

EtherCAT supplies different command sets for reading and writing:

- a combined read/write command (LRW)
- separate read and write commands (LRD/LWR)

This option allows to choose between these alternatives:

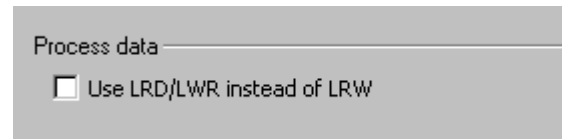


Figure 10: Configuration > Behavior > Process data

Parameter	Meaning
Use LRD/LWR instead of LRW	Logical read and write operation: If marked, separate EtherCAT read (LRD) and write (LWR) commands will be used. Otherwise, a combined EtherCAT read and write (LRW) command will be used.

Table 13: Parameters Behavior > Process data

For more information on EtherCAT read and write commands see the *EtherCAT Communication Specification*, version 1.0, section 6.2 “EtherCAT Services”, page 43.

### 3.4.4 Watchdog

Both the entire PDI (Process Data Interface) and all sync managers (separately) are monitored by watchdog timers.

The following rules apply for resetting the watchdog timers:

- Each access from the application controller to the EtherCAT Slave controller resets the watchdog timer of the Process Data Interface.
- Each write access to the associated memory area of a sync manager resets the sync manager's watchdog timer.

The watchdog timeout values can be calculated using the formula given below from an individually configurable value and a common multiplier.

The "Watchdog" part of the "Behavior" dialog allows specifying the multiplier and the individual values for PDI watchdog and sync manager watchdogs.

Watchdog

☐ Set multiplier (Reg. 400 h): 2498

☐ Set PDI watchdog (Reg. 410 h): 1000 ms 100.000

☐ Set SM watchdog (Reg. 420 h): 1000 ms 100.000

Figure 11: Configuration > Behavior > Watchdog

Parameter	Meaning
Set multiplier	Watchdog multiplier, content of the register 0x400
Set PDI watchdog	PDI watchdog, see note below
Set SM watchdog	SM watchdog, see note below

Table 14: Parameters Behavior > Watchdog



**Note:** The **PDI** & **SM** watchdog timeout values are calculated as follows.

**PDI** watchdog timeout =

$([\text{value of register 0x400}] + 2) * 40 * [\text{value of register 0x 410}]$

**SM** watchdog timeout =

$([\text{value of register 0x 400}] + 2) * 40 * [\text{value of register 0x 420}]$



### 3.5 Distributed Clock

At the page **Distributed Clock**, the DC Sync mechanism and Sync0 and Sync1 can be activated and the parameters

- Sync 0 Cycle Time,
- Sync 0 Shift Time,
- Sync 1 Cycle Time
- and Sync1 Shift Time

can be determined and set:

**Distributed Clock**

Operation mode: DC for synchronization

☒ Activate DC Sync

Sync unit cycle: 1000 μs

Sync 0

☒ Activate Sync 0

Cycle Time

☒ Sync unit cycle x 1 = 1000 μs

☐ User defined 1000 μs

Shift Time

User defined: 0 μs + Sync 0 cycle time

x 0 = 0 μs

Sync 1

☐ Activate Sync 1

Cycle Time

Sync 0 cycle time x 2 = 2000 μs

Shift Time

User defined: 0 μs

Figure 12: Configuration > Distributed Clock

#### Operation Mode

There are three operation modes available for Distributed Clocks. These are:

- *DC unused*
- *DC for synchronization*
- *User-defined Operation Mode*

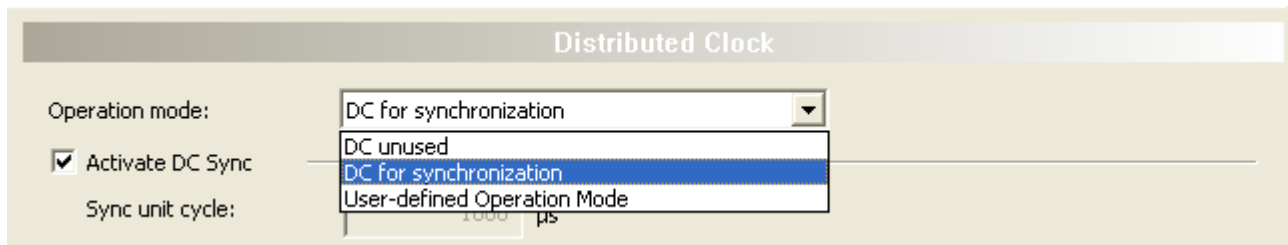


Figure 13: Operation Mode

### Activate DC Sync

In order to set up Sync0 and Sync1 the check box *Activate DC Sync* has to be set. Data can only be entered into this screen if the check box *Activate DC Sync* is checked. Otherwise all subsequent input fields, selection lists and check boxes are grayed out and deactivated.

### Sync Unit Cycle

The value displayed here is taken from the EtherCAT Master settings (Free run cycle time i.e. the cycle time of the EtherCAT-Master running free) as it is adjustable not at the EtherCAT Generic Slave but at the EtherCAT Master. Therefore the field is grayed out and disabled here

## 3.5.1 Sync 0

### Checkbox “Activate Sync 0”

Sync 0 can be activated and deactivated by checking and unchecking the check box “**Activate Sync 0**”.

#### 3.5.1.1 Sync 0 Cycle Time



**Note:** Whether this value can be adjusted or not depends on the Device Description File of the appropriate device.

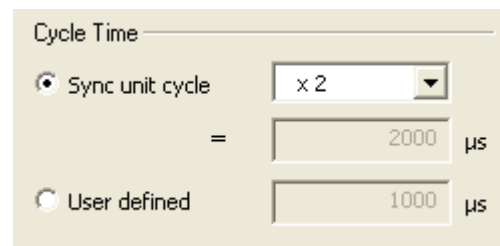
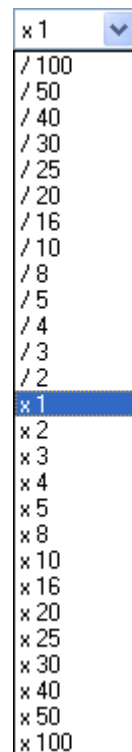


Figure 14: Sync 0 Cycle Time

The Sync 0 Cycle Time can either be derived from the Sync Unit Cycle Time adjusted at the EtherCAT Master (see above) by multiplying it with a factor or it can be entered directly.

For calculating the Sync 0 Cycle Time from the Sync Unit Cycle Time, check the check box „*Sync Unit Cycle*“. The Sync Unit Cycle Time is multiplied with (or divided by) an adjustable factor.

The following factors are available within the selector list:



For specifying the Sync 0 Cycle Time directly, check the check box „*User defined*“. The value is specified in units of microseconds. The default value is 1000 microseconds. The allowed values range from 0 to 4,294,967.295 microseconds. If the specified value violates one of these limits, an error message is issued.

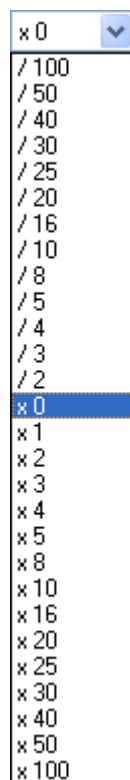
### 3.5.1.2 Sync 0 Shift Time

Figure 15: Sync 0 Shift Time

The Sync 0 Shift Time is calculated in the following way:

The Sync 0 Cycle Time is multiplied with (or divided by) an adjustable factor, the Sync 0 Shift Time Modifier.

The following values are available within the selector list:




**Note:** In contrast to the Sync 0 Cycle Time described above, here also the factor 0 may be chosen!

The default value for this factor is

- 0: if the chosen operation mode (see above) is *DC for synchronization*
- 1: otherwise.

Then the value specified in the input field *User defined* is added to the product. The allowed range of values extends from -2147483.648 to +2147483.647. If a value outside of these limits is specified, an error message will be issued.

The sum is displayed in the lower field having been grayed out. It is now used as the Sync 0 Shift Time.

## 3.5.2 Sync 1

### 3.5.2.1 Checkbox “Activate Sync 1”

Sync 1 can be activated and deactivated by checking and unchecking the check box “**Activate Sync 1**”.

### 3.5.2.2 Sync 1 Cycle Time

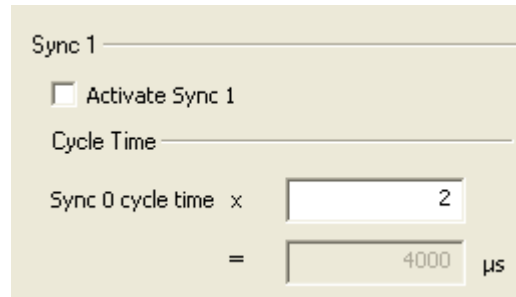


Figure 16: Sync 1 Cycle Time

The Sync 1 Cycle Time is calculated as the product of the Sync 0 Cycle Time (see subsection “*Sync 0*” above) with a positive integer factor that is specified in the input field right of *Sync 0 cycle time x*.

The range of allowed factors extends from 1 to 1024. If a value violating these limits is entered, an error message will be issued.

The product is then displayed in the grayed out field just below of the input field.

### 3.5.2.3 Sync 1 Shift Time



Figure 17: Sync 1 Shift Time

### 3.6 Process Data

In EtherCAT, the process data objects (PDO) are assigned to sync managers. A sync manager is used for synchronization of data communication on a certain communication channel. This channel is configured either for input or for output and either for cyclic or for acyclic communication. (This is defined within the device description file.) Up to 16 sync manager can be configured. These are numbered from 0 up to 15. The process data dialog only displays the sync manager which is for cyclic communication. Possible sync managers for acyclic communication is displayed in the **CoE MailBox** dialog.

The illustration below shows the process data dialog of the EtherCAT Generic Slave DTM:

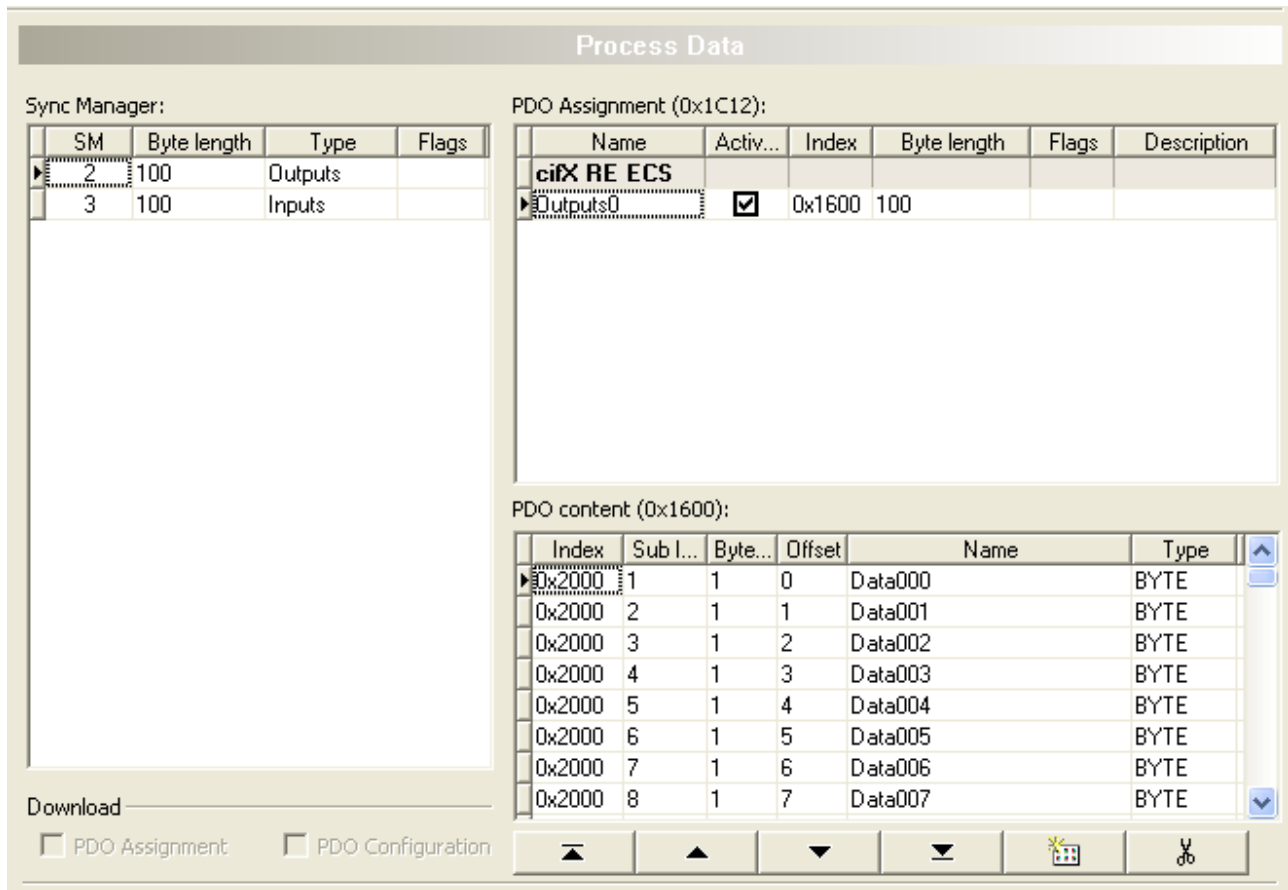


Figure 18: Configuration > Process data

The process data dialog consists of three parts:

- Sync Manager area
- PDO Assignment area
- PDO Content area

### 3.6.1 Sync Manager

Within the process data dialog only those PDOs can be shown simultaneously, which are assigned to the same sync manager.

The left part of the process data dialog represents the *Sync Manager* area which is used for choosing the sync manager to be used. It provides the **Sync Manager** table for choosing the sync manager whose PDOs are to be displayed, and additionally two checkboxes for PDO assignment and PDO configuration which however are relevant in case of variable configuration only.

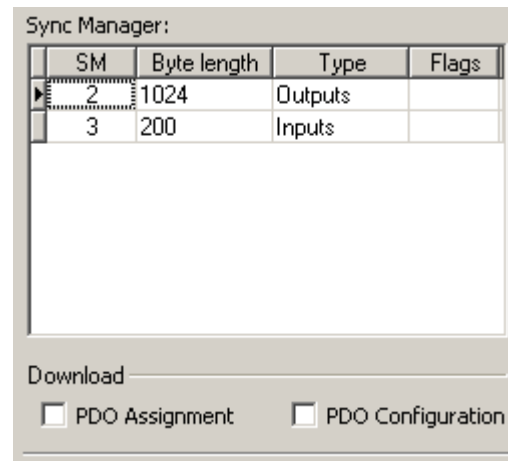


Figure 19: Configuration > Process data > Sync Manager

The table **Sync Manager** displays the configuration of the sync managers for the device, as defined in its device description file (DDF). For each of the 4 sync managers available at maximum in the table, the following information is displayed:

Parameter	Meaning
SM	Sync Manager channel number (0-15)
Byte length	Sync Manager length in bytes
Type	Sync Manager type (Inputs/ Outputs)
Flags	Sync Manager flags (Flag F = fixed contents)

Table 15: Parameters Process data > Sync Manager

In case this device supports acyclic communication based on mailboxes the Sync Manager 0 is used for the mailbox output (master to slave) and the Sync Manager 1 is used for the mailbox input (slave to master).

If the device does not support acyclic communication based on mailboxes, Sync Manager 0 - 15 can be used for the Process data outputs and inputs (also see Figure *Configuration > Process data > Sync Manager*).

The size of the Sync Managers is defined by the assigned PDO objects. In this case the PDO object is assigned to the Sync Manager 3 and because the content of this object has the size 8 the Sync Manager is configured to 8 bytes.

The read-only checkboxes below show the download flags which are defined in device description file. They have the following meaning:

Checkbox	Meaning
PDO Assignment	<p>This flag indicates whether to download PDO assignment of Sync Manager.</p> <p>If this flag is checked, this means that PDO assignment of the slave is writable and special CoE Init-Commands should be generated by the EtherCAT Master DTM in the Configuration Information File.</p> <p>These CoE Init-commands include the indices of transmit/receive PDOs. Therefore the slave knows how such PDOs are related to the Sync Manager.</p>
PDO Configuration	<p>This flag indicates whether to download PDO mapping.</p> <p>If this flag is set as checked, this means that PDO mapping of the slave is writable and special CoE Init-Commands should be generated by the EtherCAT Master DTM in the Configuration Information File.</p> <p>These CoE Init-Commands include the indices of mapped process data objects. Therefore slave knows how mapped PDOs are related to transmit /receive PDOs.</p>

Table 16: Meaning of Checkboxes



### 3.6.2 PDO Assignment (Index 0x1C10- 0x1C1F)

The upper right part of the process data dialog represents the *PDO Assignment* area for the sync manager chosen within the left part of the window. It contains the transmit/receive PDOs.

Thus the contents of this table depends on the choice of the sync manager in the left part of the window. If a sync manager with type “Outputs” is selected, all defined receive PDOs (Index 0x1600 -0x17FF) in the device description file will be shown in this table.

Similarly, if a sync manager with type “Inputs” is selected, all defined transmit PDOs (Index 0x1A00 -0x1BFF) will be shown in this table.

PDO Assignment (0x1C12):

Name	Activate	Index	Byte length	Flags	Description
ciX RE ECS					
►Outputs0	<input checked="" type="checkbox"/>	0x1600	100		

Figure 20: Configuration > Process data > PDO Assignment

For the transmit/receive PDOs assigned to the chosen sync manager, the following values are displayed:

Parameter	Meaning
Name	Name of the PDO
Activate	Activation check box for assigned PDO of the selected Sync Manager
Index	Object index of the PDO
Byte length	Length of the PDO in bytes
Flags	Flags assigned to the PDO
Description	Description of the PDO

Table 17: Parameters Process data > PDO Assignment

The PDO assignment is stored in a sync manager channel object within the object dictionary of the EtherCAT slave. The index of such an object is displayed in the headline of the PDO assignment area, and it has a relationship with the sync manager channel number(n) :

$$\text{Index} = 0x1C10 + n \quad (n = 0 \dots 15)$$

In the current example the information was taken from the object with the index 0x1C12 indicating sync manager 2 had been chosen for display.

For slave devices with selectable PDO assignment, PDO/PDOs can be selected from the given list of multiple fixed PDOs according to the rules defined by the device description file.

### 3.6.3 PDO Content (Index 0x1600-0x17FF, 0x1A00-0x1BFF)

The lower right part of the process data dialog represents the *PDO Content* area. It contains the mapped process data objects of the transmit/receive PDO, which has been selected in the upper right part of the window.

PDO content (0x1600):

Index	Sub Index	Byte length	Offset	Name	Type
0x2000	1	1	0	Data000	BYTE
0x2000	2	1	1	Data001	BYTE
0x2000	3	1	2	Data002	BYTE
0x2000	4	1	3	Data003	BYTE
0x2000	5	1	4	Data004	BYTE
0x2000	6	1	5	Data005	BYTE
0x2000	7	1	6	Data006	BYTE
0x2000	8	1	7	Data007	BYTE
0x2000	9	1	8	Data008	BYTE
0x2000	10	1	9	Data009	BYTE
0x2000	11	1	10	Data010	BYTE
0x2000	12	1	11	Data011	BYTE
0x2000	13	1	12	Data012	BYTE
0x2000	14	1	13	Data013	BYTE

Figure 21: Configuration > Process Data > PDO Content

For the mapped process data objects, the following values are displayed:

Parameter	Meaning
Index	Object index Subindex of the PDO
Sub index	Sub index for the PDO
Byte length	Size of the PDO entry in Byte
Offset	Offset of the PDO entry (relative to 0x1600 for output and to 0x1A00 for input PDOs)
Name	Name of the PDO entry
Type	Data type of the PDO entry

Table 18: Parameters Process Data > PDO Content

The PDO content is stored in a transmit/receive object within the object dictionary of the EtherCAT slave. You can find the correct index of the selected transmit/receive PDO in the headline of the PDO assignment area.

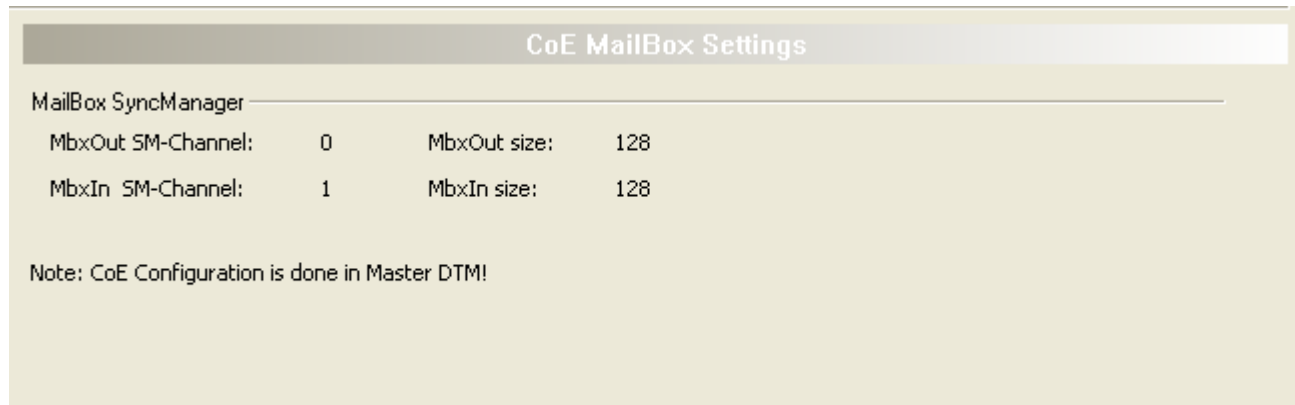
In the current example the information was taken from the object with index 0x1604.

For an explanation of the navigation buttons see section “*Table Line*” of this document.

## 3.7 Mailbox

### 3.7.1 CoE

For slave devices supporting the CoE MailBox, the following dialog page is additionally displayed:



CoE MailBox Settings			
MailBox SyncManager			
MbxOut SM-Channel:	0	MbxOut size:	128
MbxIn SM-Channel:	1	MbxIn size:	128
Note: CoE Configuration is done in Master DTM!			

Figure 22: Configuration > Mailbox > CoE Mailbox Settings

The dialog page provides the following information:

- The channel number of the sync manager (for mailbox input and output)
- The configured mailbox size (this applies both for the input mailbox and for the output) mailbox

The complete MailBox configuration for each slave with MailBox support is done in the EtherCAT Master-DTM.

## 4 Description

### 4.1 Overview Description

The **Description** pages contain the following information:

- XML Viewer page: the devices XML file content in HTML style.

#### Description Dialog Pages

The table below informs about the contents of the **Description** dialog page:

Subsection	Manual Page
XML DDF Viewer	37

Table 19: Descriptions of the Description Pages

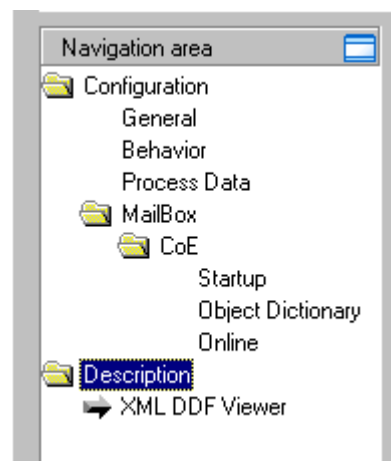


Figure 23: Navigation Area – Description

## 4.2 XML DDF Viewer

The **XML DDF Viewer** displays the content of the DDF file of the device which is stored in an XML format..

Under **Filename** the absolute file directory path and the file name of the displayed DDF file is displayed. **Find what** offers a search feature to search for text contents within the text of the DDF file.

In the DDF Viewer window on the left side, the line number is displayed for simple overview, the further entries show the DDF file in text format.

Parameter	Meaning
Filename	File directory path and the file name of the displayed DDF file.
Find what	Search feature to search for text contents within the text of the DDF file.
Match case	Search option
Match whole word	Search option

Table 20: Device Description – XML DDF Viewerr

The **XML DDF Viewer** page consists of the following elements:

- **File name** shows the absolute path of the DDF file.
- **Find what** offers searching for specific text within the DDF file.
- Using the **Find Next** button allows you to jump to the next occurrence of the text to be searched for within the XML DDF file.
- Check **Match case** if you want to perform a case-sensitive search.
- Check **Match whole word** if only entire words should match and fragments of words should be excluded from matching.



**Note:** You can also access the search functionality of the **XML DDF Viewer** by typing **Ctrl-F** on the keyboard.

## 5 Appendix

### 5.1 User Rights

User-rights are set within the FDT-container. Depending on the level the configuration is accessible by the user or read-only.

To access the **Configuration** panes of the generic EtherCAT Slave DTM you do not need special user rights. Also all users can select the decimal or hexadecimal Display mode or sort table entries.



**Note:** To edit, set or configure the parameters of the **Configuration** panes, you need user rights for *Maintenance*, for *Planning Engineer* or for *Administrator*.

The following tables give an overview of the user right groups and which user rights you need to configure the single parameters.

#### 5.1.1 Configuration

	Observer	Operator	Maintenance	Planning Engineer	Administrator
<i>General</i>	D	D	X	X	X
<i>Behavior</i>	D	D	X	X	X
<i>Distributed Clock</i>	D	D	X	X	X
<i>Process Data</i>	D	D	X	X	X
<i>Mailbox</i>	D	D	X	X	X

Table 21: Configuration (D = Displaying, X = Editing, Configuring)

### 5.2 References

- [1] Device Type Manager (DTM) Style Guide, Version 1.0 ; FDT-JIG - Order No. <0001-0008-000>
- [2] EtherCAT Communication Specification, August 2007
- [3] EtherCAT Slave Protocol API Manual, Revision 3 (V4), Hilscher GmbH 2013  
EtherCAT Slave Protocol API Manual, Revision 21 (V2), Hilscher GmbH 2013

## 5.3 List of Figures

Figure 1: Dialog Structure of the Generic EtherCAT Slave DTM	11
Figure 2: Navigation Area	12
Figure 3: Status Bar – Status Fields 1 to 6	15
Figure 4: Status Bar Display Example	15
Figure 5: Navigation Area - Configuration	17
Figure 6: Configuration > General	19
Figure 7: Configuration > Behavior	20
Figure 8: Configuration > Behavior > State Machine Timeout - Configuration	21
Figure 9: Configuration > Behavior > Device Check	22
Figure 10: Configuration > Behavior > Process data	23
Figure 11: Configuration > Behavior > Watchdog	24
Figure 12: Configuration > Distributed Clock	25
Figure 13: Operation Mode	26
Figure 14: Sync 0 Cycle Time	26
Figure 15: Sync 0 Shift Time	27
Figure 16: Sync 1 Cycle Time	29
Figure 17: Sync 1 Shift Time	29
Figure 18: Configuration > Process data	30
Figure 19: Configuration > Process data > Sync Manager	31
Figure 20: Configuration > Process data > PDO Assignment	33
Figure 21: Configuration > Process Data > PDO Content	35
Figure 22: Configuration > Mailbox > CoE Mailbox Settings	36
Figure 23: Navigation Area – Description	37

## 5.4 List of Tables

Table 1: Overview Dialog Pages	4
Table 2: List of Revisions	4
Table 3: General Device Information	12
Table 4: Overview Dialog Panes	13
Table 5: OK, Cancel, Apply and Help	14
Table 6: Selecting, inserting, deleting Table Line	14
Table 7: Status Bar Icons [1]	15
Table 8: Getting started - Configuration Steps	16
Table 9: Descriptions of the Dialog Pages Configuration	17
Table 10: General Page Parameters	19
Table 11: Coding of Parameter "Physics"	19
Table 12: Parameters Behavior > Device checkup	22
Table 13: Parameters Behavior > Process data	23
Table 14: Parameters Behavior > Watchdog	24
Table 15: Parameters Process data > Sync Manager	31
Table 16: Meaning of Checkboxes	32
Table 17: Parameters Process data > PDO Assignment	33
Table 18: Parameters Process Data > PDO Content	35
Table 19: Descriptions of the Description Pages	37
Table 20: Device Description – XML DDF Viewerr	38
Table 21: Configuration (D = Displaying, X = Editing, Configuring)	39



## 5.5 Glossary

### CoE

CANopen over EtherCAT

CoE denominates a method for accessing an object dictionary which has been adopted for use in EtherCAT from CANopen.

### DDF

Device Description File.

### DTM

Device Type Manager.

The Device Type Manager (DTM) is a software module with graphical user interface for the configuration or for diagnosis of devices.

### E<sup>2</sup>PROM

Electronically erasable Programmable Read-Only Memory

### E-Bus

Bus system based on LVDS standard

### EDS

Electronic Data Sheet

### EtherCAT-Master

A device which is responsible for the configuration, parameterization of the EtherCAT segment, all connected devices' controllers, and cyclic process data exchange, mailbox and diagnostics services.

### EtherCAT-Port

Physical type of data transmission used by EtherCAT. An EtherCAT Slave Master can have up to 4 EtherCAT ports. Can be one of the following three alternatives:

- E-Bus
- 100Base-TX
- 100Base-FX

### EtherCAT-Slave

A device which is configured by the Master, receives telegrams with output data, commands from it and provides input and status data.

### FDT

Field Device Tool

FDT specifies an interface, in order to be able to use DTM (Device Type Manager) in different applications of different manufacturers

**FMMU**

Fieldbus Memory Management Unit

A field bus memory management unit organizes a mapping of EtherCAT logical addresses to physical addresses.

**LVDS**

Low Voltage Differential Signals

A data transmission standard specified in ANSI/TIA/EIA-644-1995 and used in Beckhoff's E-Bus.

**Object Dictionary**

An object dictionary is a storage area for device parameter data structures. It is accessed in standardized manner very similarly as this is done in CANopen..

**PDO**

Process Data Objekt

Specific data object for cyclic data communication.

**SDO**

Service Data Objekt

Specific data object for acyclic data communication, i.e. mailbox-based communication. It is typically used for accessing the object dictionary.

**Sync Manager**

Synchronization Manager

A sync manager synchronizes the data communication on a specific communication channel. It is configured for managing either input or output and for working either cyclically or acyclically based on mailboxes. Configuration is done within the DDF file. Up to 4 sync managers numbered 0 to 3 can be configured.

**XML**

Extensible Markup Language

A versatile data storage format defined by the World Wide Web Consortium (W3C). It is based on elements and attributes. In EtherCAT, it is used in device descriptions stored in DDF files

## 5.6 Contacts

### Headquarters

#### Germany

Hilscher Gesellschaft für  
Systemautomation mbH  
Rheinstrasse 15  
65795 Hattersheim  
Phone: +49 (0) 6190 9907-0  
Fax: +49 (0) 6190 9907-50  
E-Mail: [info@hilscher.com](mailto:info@hilscher.com)

#### Support

Phone: +49 (0) 6190 9907-99  
E-Mail: [de.support@hilscher.com](mailto:de.support@hilscher.com)

### Subsidiaries

#### China

Hilscher Systemautomation (Shanghai) Co. Ltd.  
200010 Shanghai  
Phone: +86 (0) 21-6355-5161  
E-Mail: [info@hilscher.cn](mailto:info@hilscher.cn)

#### Support

Phone: +86 (0) 21-6355-5161  
E-Mail: [cn.support@hilscher.com](mailto:cn.support@hilscher.com)

#### France

Hilscher France S.a.r.l.  
69500 Bron  
Phone: +33 (0) 4 72 37 98 40  
E-Mail: [info@hilscher.fr](mailto:info@hilscher.fr)

#### Support

Phone: +33 (0) 4 72 37 98 40  
E-Mail: [fr.support@hilscher.com](mailto:fr.support@hilscher.com)

#### India

Hilscher India Pvt. Ltd.  
Pune, Delhi, Mumbai  
Phone: +91 8888 750 777  
E-Mail: [info@hilscher.in](mailto:info@hilscher.in)

#### Italy

Hilscher Italia S.r.l.  
20090 Vimodrone (MI)  
Phone: +39 02 25007068  
E-Mail: [info@hilscher.it](mailto:info@hilscher.it)

#### Support

Phone: +39 02 25007068  
E-Mail: [it.support@hilscher.com](mailto:it.support@hilscher.com)

#### Japan

Hilscher Japan KK  
Tokyo, 160-0022  
Phone: +81 (0) 3-5362-0521  
E-Mail: [info@hilscher.jp](mailto:info@hilscher.jp)

#### Support

Phone: +81 (0) 3-5362-0521  
E-Mail: [jp.support@hilscher.com](mailto:jp.support@hilscher.com)

#### Korea

Hilscher Korea Inc.  
Seongnam, Gyeonggi, 463-400  
Phone: +82 (0) 31-789-3715  
E-Mail: [info@hilscher.kr](mailto:info@hilscher.kr)

#### Switzerland

Hilscher Swiss GmbH  
4500 Solothurn  
Phone: +41 (0) 32 623 6633  
E-Mail: [info@hilscher.ch](mailto:info@hilscher.ch)

#### Support

Phone: +49 (0) 6190 9907-99  
E-Mail: [ch.support@hilscher.com](mailto:ch.support@hilscher.com)

#### USA

Hilscher North America, Inc.  
Lisle, IL 60532  
Phone: +1 630-505-5301  
E-Mail: [info@hilscher.us](mailto:info@hilscher.us)

#### Support

Phone: +1 630-505-5301  
E-Mail: [us.support@hilscher.com](mailto:us.support@hilscher.com)